

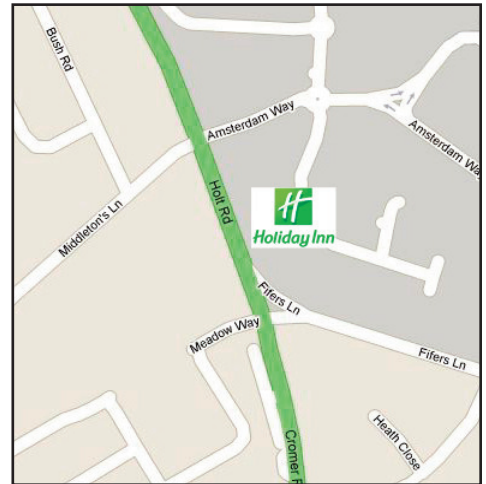
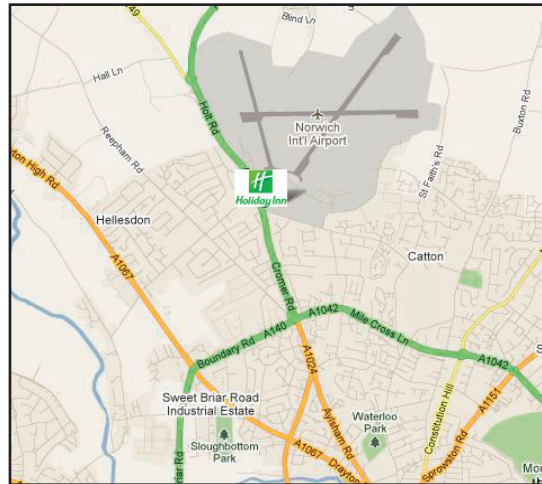
Holiday Inn Norwich - Joining Instructions

Location:

Holiday Inn Norwich

(Norwich City Airport)
North Cromer Road,
Norwich NR6 6JA
Tel: 01603 410544

Website: hinorwich.com



Directions (2 minutes from Norwich Airport):

From the A11, turn left on the ring road and follow the signs for Cromer and Norwich Airport. Turn left onto the A140 (signposted for Cromer) and then turn right at the traffic lights, which is signposted "Airport Passengers". The Holiday Inn Norwich-North is on the right. From A47, turn off towards Norwich City Centre and follow the above directions from the ring road.

Course times:

Your course starts promptly at **9.30am** and finishes at approximately **4.30 - 5.00pm** on both days. We will have a 15 minute break morning and afternoon, and a 45-60 minute break for lunch.

Parking: On site guest car parking.

Refreshments:

You can purchase food at the hotel's restaurant (Concorde Restaurant). Alternatively please bring your own refreshments and drink if you prefer.

What else do I need to know?

Please bring a notepad and pen. We recommend that you wear a short-sleeved top for our vein identification exercises. Please remember to check back on our website (News Section on Home Page) within 24 hours of your course for any last minute changes and updates (including traffic delays).

I have other questions:

If you cannot find the answers to your questions on our website (FAQ section) then please don't hesitate to email us at: info@geopace.com

Stephen Eagleton
Course Director, Geopace Training

Geopace Limited

Lodgefield Suite The Rufus Centre Steppingley Road Flitwick Bedfordshire MK45 1AH
T: 01525 713377 E: info@geopace.com W: www.geopace.com