

HOLIDAY INN

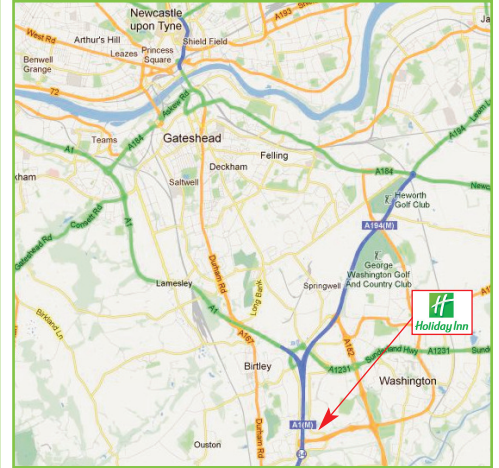
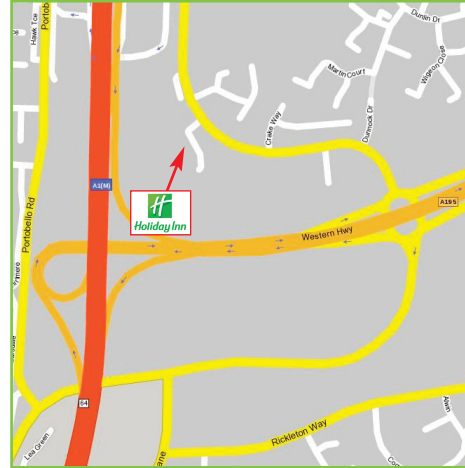
WASHINGTON – NEWCASTLE UPON TYNE

Joining Instructions

Location:

Emerson, Washington, Newcastle-upon-Tyne, NE37 1LB

Tel: 0871 423 4876 Website: <http://www.holidayinn.com/hotels/gb/en/washington/nclws/hoteldetail>



Directions:

BY CAR: Take the A195 exit, junction 64, off the A1M. Take the left hand slip road, sign posted district 5. Turn left at the roundabout and the hotel is on the left.

BY TRAIN: Station Name: Chester le Street. Distance: 4.0 mile to the Hotel. Taxi Charge (one way) is approx. £10.00

Course times: Your course starts promptly at 9.30am and finishes at 5.00pm (+/- 30 minutes) on both days. We will have a 15 minute break morning and afternoon, and a 45-60 minute break for lunch.

Parking: The hotel has ample free car parking.

Refreshments: The hotel's "Traders" restaurant serves a variety of snacks and drinks. We will be providing free tea/coffee and biscuits, and bottled water will be available at all times throughout the course.

What else do I need to know? Please bring a notepad and pen. We recommend that you wear a short-sleeved or sleeveless top for our vein identification exercises.

Please remember to check back on our website (News Section on Home Page) within 24 hours of your course for any last minute changes and updates (including traffic delays).

Any other questions? If you cannot find the answers to your questions on our website (FAQ section) then please don't hesitate to email us at: info@geopace.com



Stephen Eagleton
Course Director, Geopace Training

Geopace Limited

Lodgefield Suite The Rufus Centre Steppingley Road Flitwick Bedfordshire MK45 1AH
T: 01525 713377 E: info@geopace.com W: www.geopace.com